



above

2024 PRODUCT CATALOG

PROGRESSION SERIES SMART UMBRELLA

THE NEXT PROGRESSION OF AUTOMATION UNFOLDS

Outfitted with some of our most advanced features to date, Above's Progression Cantilever Smart Umbrellas utilize extensive automation and smart controls to bring your outdoor comfort and convenience to new heights. Ideal for providing shade in dining areas, patios, and other compact outdoor seating spaces, these cantilever umbrellas redefine excellence in both form and function.



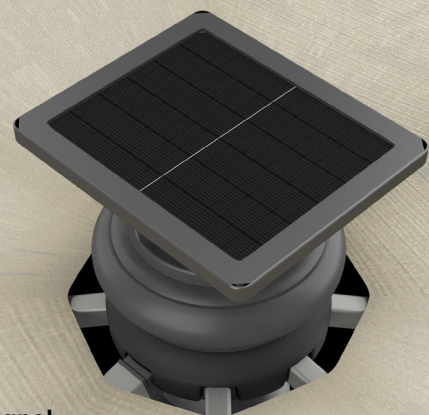
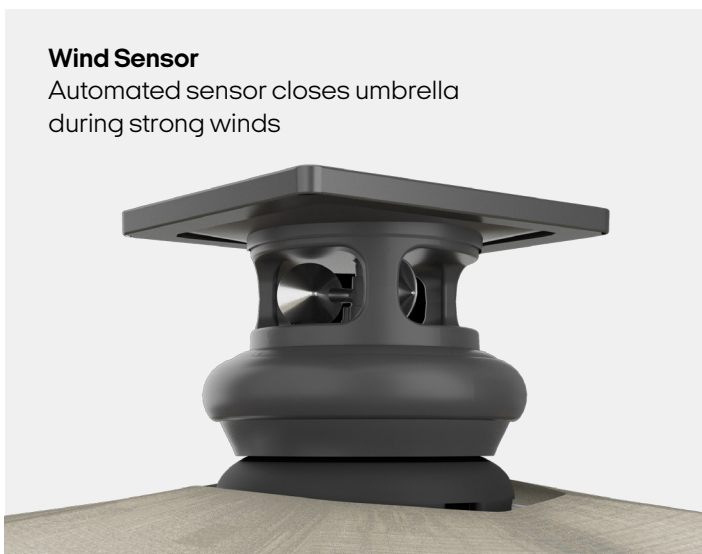
Spacious Shades with Seamless Setup

Our cantilever design, featuring an offset pole, guarantees a spacious and unobstructed atmosphere, seamlessly blending style with practicality. Beyond staying unobtrusive around people and furnishings, the canopies are designed for easy tilting and rotation, allowing users to achieve the ideal angle for shade at any time of the day. With the addition of Above's smart features, Progression Cantilever umbrellas make for a most versatile and elegant shading solution for all sorts of outdoor settings.



Wind Sensor

Automated sensor closes umbrella during strong winds



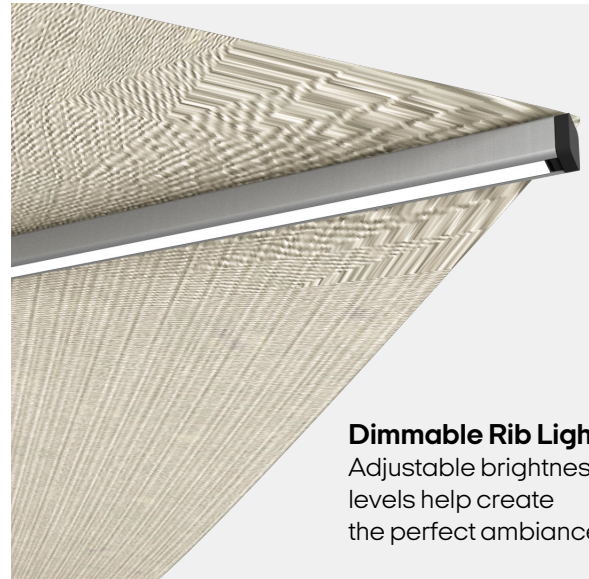
Solar Panel

Self-charging power source for lights and smart automation



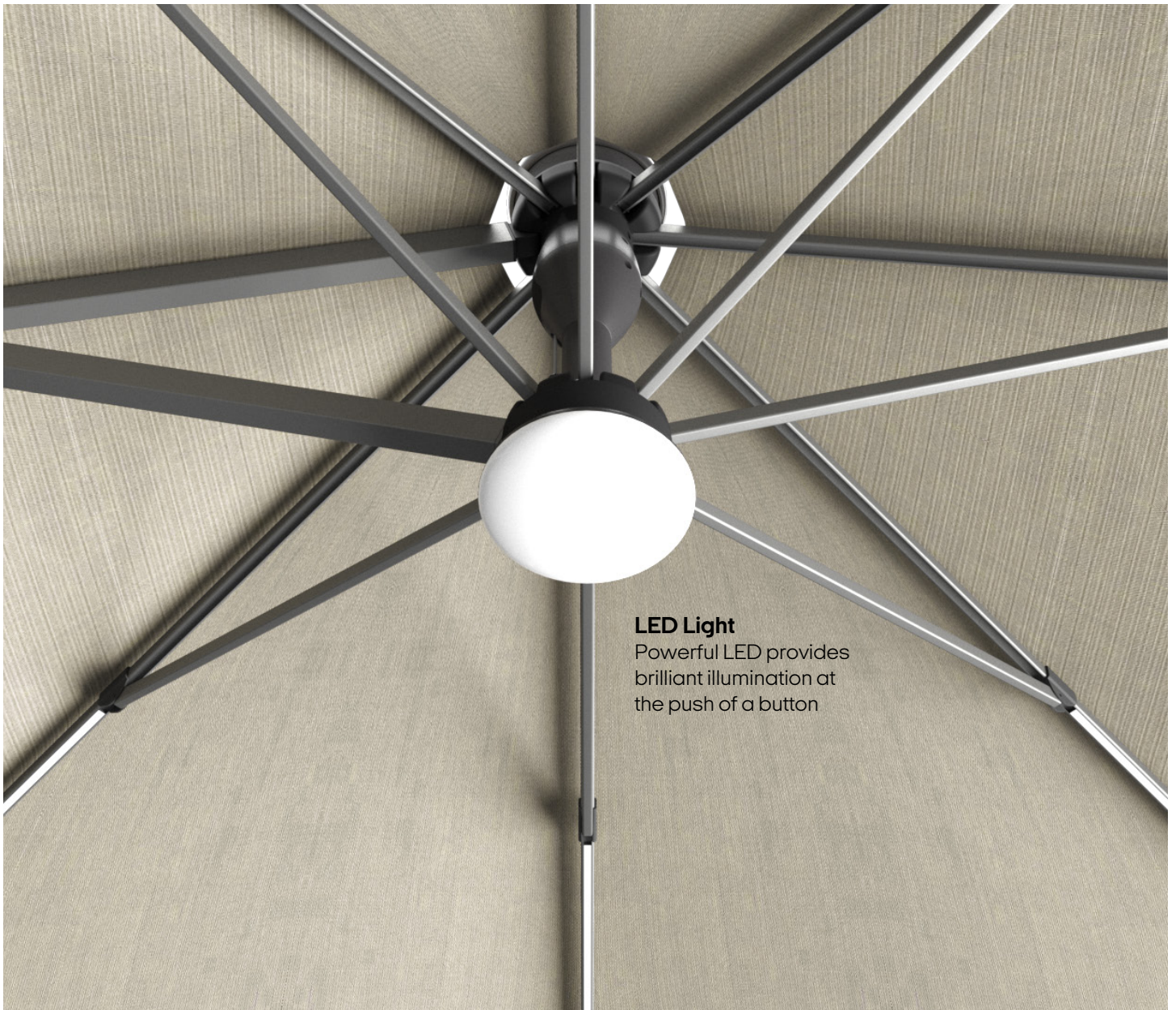
Remote Control

Control single umbrellas or whole groups



Dimmable Rib Lights

Adjustable brightness levels help create the perfect ambiance



LED Light

Powerful LED provides brilliant illumination at the push of a button

PROGRESSION SERIES SMART UMBRELLA



FABRIC OPTIONS

Spectrum
Dove

Spectrum
Indigo

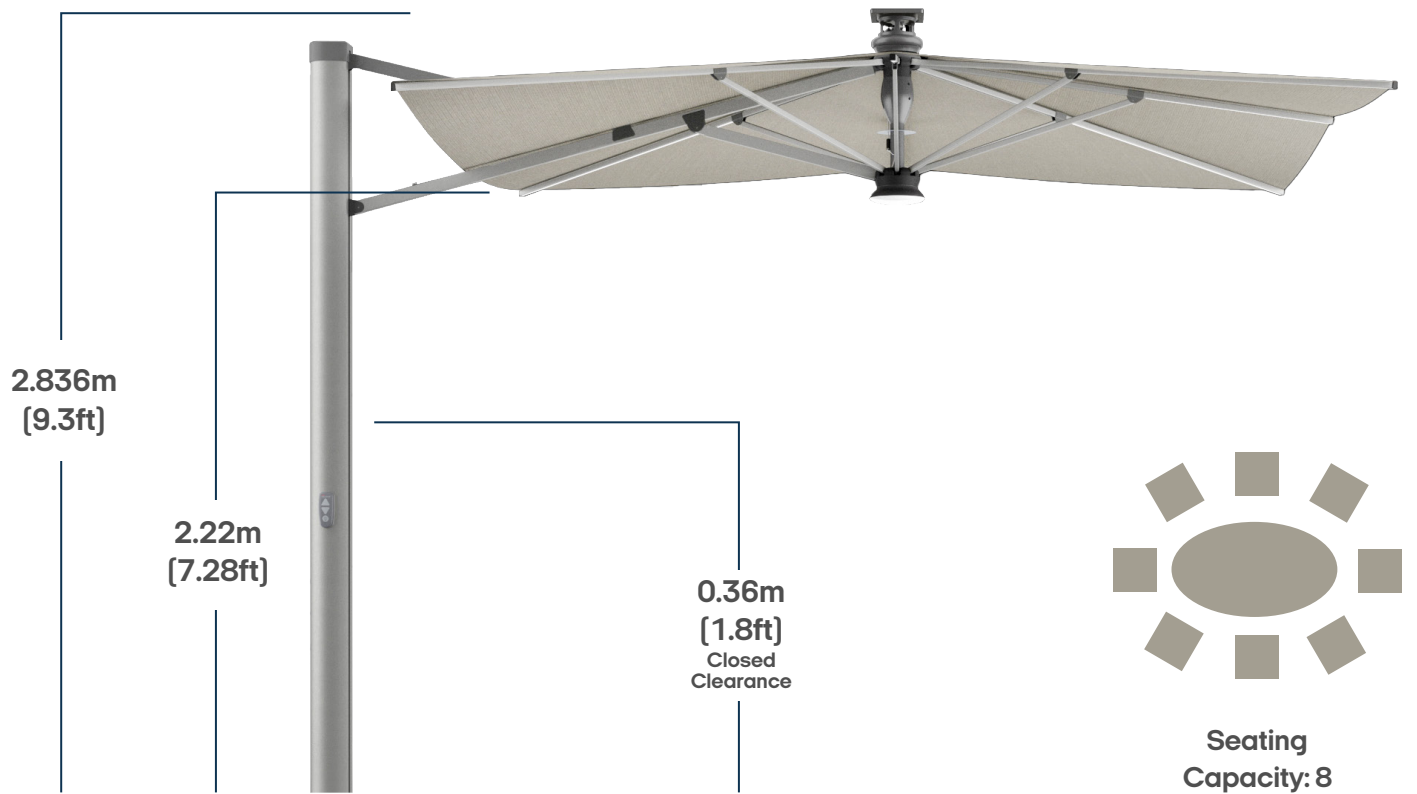
Fabric by:



SPECIFICATIONS

Shape:	Square
Pole Material:	Powder Coated Aluminum
Pole Thickness:	1.80 mm
Rib Material:	Powder Coated Aluminum
Rib Thickness:	1.20 mm
Electronic Housing:	PC [Polycarbonate]
Lift Style:	Automatic / Remote
Tier Vent:	11 ft 1 Vent
LED Light:	Under the runner hub/Rib Bar
LED Brightness:	300 lumens
LED Temperature:	3000K
Charging:	Solar / Micro USB C Port

PROGRESSION SERIES SMART UMBRELLA



Model#:

Item#:

Pole Diameter: 100mm x 78mm

Wind Vents: 1

Product Dimensions: 114" x 132" x 132"

Product Weight: 106.70 lbs.

Carton Size: 87.34" x 17.70" x 14.16"

Carton Weight: 115.28 lbs.



HEIGHT SERIES SMART UMBRELLA

HEIGHT SERIES SMART UMBRELLA

AUTOMATIC COMFORT AT THE PUSH OF A BUTTON

HEIGHT 2 CLASSIC
SMART UMBRELLA
9 FT.



HEIGHT 2 CLASSIC
SMART UMBRELLA
11 FT.



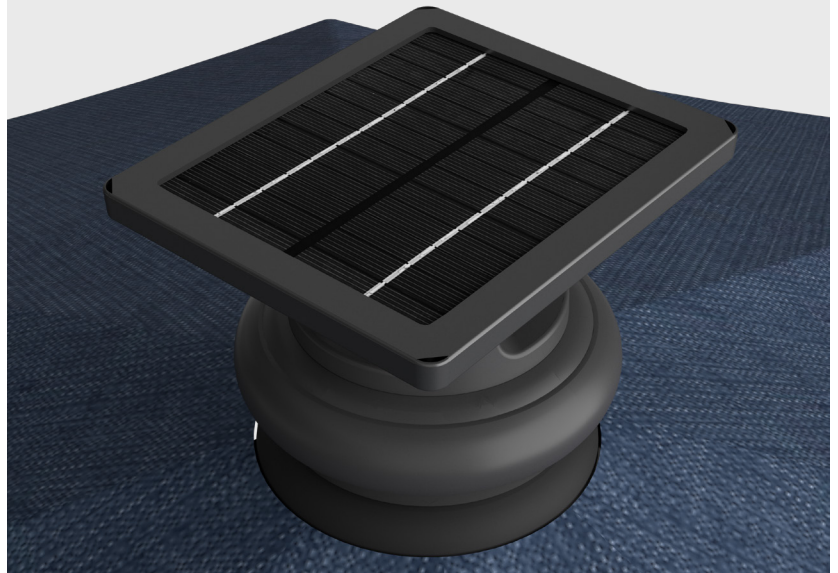


Though an essential bit of patio furniture, traditional umbrellas can be bothersome to manage, being susceptible to dirt and wind, and time consuming to set up and close, especially when you have multiple umbrellas. The Above Height Series Smart Umbrella introduces automation and smart controls to make all these problems a thing of the past.

Equipped with advanced technologies, including a remote control, built-in battery, high efficiency solar panel, a wind sensor, and an ambient light, the Above Smart Umbrella represents the most cutting-edge development for outdoor patio umbrellas.

Solar Panel

Charge your umbrella using the sun.



Wind Sensor

Auto close your umbrella when high winds are detected.



LED Light

Add some ambiance to your umbrella at night.



Remote Control

Open one or multiple umbrellas from one remote.

HEIGHT SERIES SMART UMBRELLA

FABRIC OPTIONS



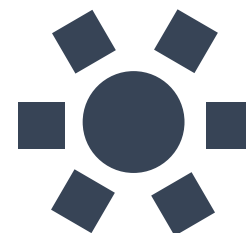
Durata™ Fabric

SPECIFICATIONS

Shape:	Octagon
Pole Material:	Powder Coated Aluminum
Pole Thickness:	1.00 mm
Rib Material:	Powder Coated Aluminum
Rib Thickness:	1.20 mm
Electronic Housing:	PC [Polycarbonate]
Lift Style:	Automatic / Remote
Tier Vent:	9 ft 1 Vent / 11 ft 2 Vents
LED Light:	Under the runner hub
LED Brightness:	300 lumens
LED Temperature:	3000K
Charging:	Solar / Micro USB C Port



HEIGHT SERIES SMART UMBRELLA – 9FT.



Seating
Capacity: 4-6



Model#:	AB-HV2-9
Item#:	AB-HV2-9P [Pewter] AB-HV2-9S [Sapphire]
Pole Diameter:	38 mm
Wind Vents:	1
Product Dimensions:	102" X 108" X 108"
Product Weight:	27.72 lbs.
Carton Size:	67.67" x 7.48" x 7.48"
Carton Weight:	31.9 lbs.

HEIGHT SERIES SMART UMBRELLA – 11FT.



Model#:	AB-HV2-11
Item#:	AB-HV2-11P [Pewter] AB-HV2-11S [Sapphire]
Pole Diameter:	38 mm
Wind Vents:	1
Product Dimensions:	105" X 132" X 132"
Product Weight:	32.23 lbs.
Carton Size:	74.36" x 7.48" x 7.48"
Carton Weight:	33.9 lbs.



CLICK SERIES UMBRELLA

CLICK SERIES UMBRELLA

ONE CLICK IS ALL YOU NEED

The OneClick™ umbrella is an affordable and elegant solution for your umbrella problems. Nature, weather, accidents, there are things none of us can control. Even the most durable materials can be damaged by these natural forces, especially umbrellas which are always outdoors. It's always just one rib that breaks, but even just one is enough to render the umbrella useless. What if, instead of needing to replace an entire umbrella, you could replace a broken rib with just one click. Making your umbrella last longer so you can continue to enjoy the good things in life. This is where the OneClick™ umbrella comes in.

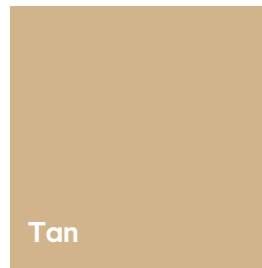
ONECLICK 2 PATIO UMBRELLA



CLICK SERIES UMBRELLA



FABRIC OPTIONS



SPECIFICATIONS

Shape:	Octagon
Pole Material:	Steel
Pole Thickness:	0.80 mm
Rib Material:	Steel
Rib Thickness:	0.60 mm
Rib Profile	Oval
Lift Style:	Crank
Tier Vent:	9 ft 1 Vent
Tilt	Push Button
Fabric Type	Polyester



FEATURES



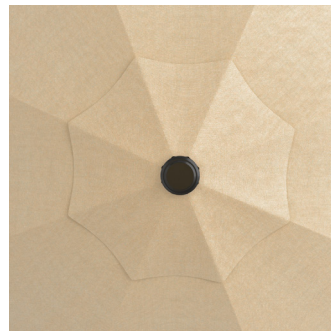
Detachable Ribs

Easily replace broken ribs



Steel Body

The pole and ribs are reinforced by steel



Polyester Fabric

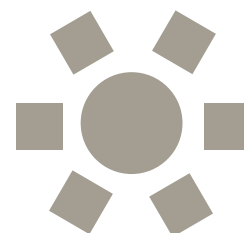
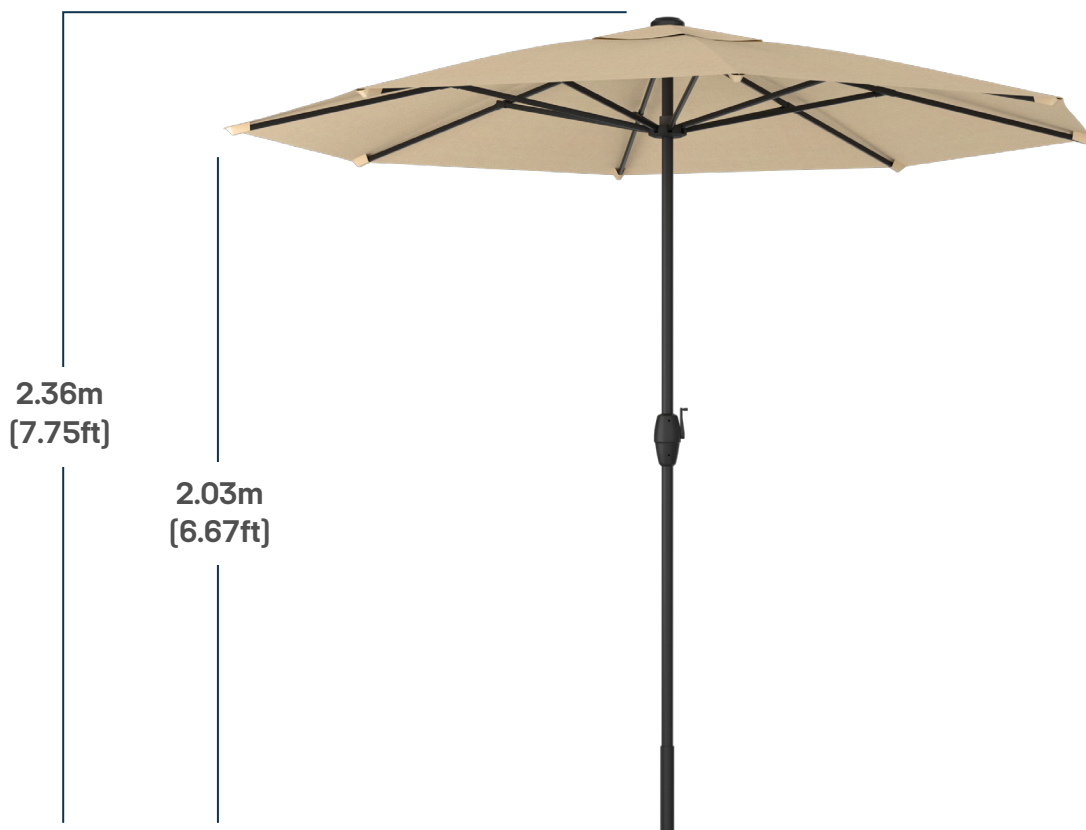
100% durable and stretchable polyester canvas



2 Tier Vent

Wind vent to prevent your umbrella from being blown away

CLICK SERIES UMBRELLA



**Seating
Capacity: 4-6**



Model#:	AB-OCV2-9
Item#:	AB-OCV2-9N [Navy Blue] AB-OCV2-9T [Tan]"
Pole Diameter:	38 mm
Wind Vents:	1
Product Dimensions:	108" 108" 102"
Product Weight:	12.10 lbs.
Carton Size:	54.30" x 5.70" x 5.70"
Carton Weight:	14.3 lbs.



PATIO UMBRELLA THAT GOES
ABOVE & BEYOND

TO LEARN MORE, VISIT US ONLINE AT
WWW.THEABOVE.COM

 jasonl@theabove.com  314-484-6004



All other trademarks, service marks, company names and name brands cited herein are properties of their respective owners. [116-476-01152024]


above and Beyond™